



# Hva betyr breeam nor for mur og betong?



## PROGRAM

Velkommen;

bakgrunn for møtet v/Jan Eldegard, byggutengrenser.no

BREEAM NOR; v/ Katharina Bramslev, hambra

kort systembeskrivelse BREEAM

bakgrunn for utarbeidelse av BREEAM NOR

Materialdelen av BREEAM NOR; v/ Katharina Bramslev, hambra

hvilke materialegenskaper vektlegges?

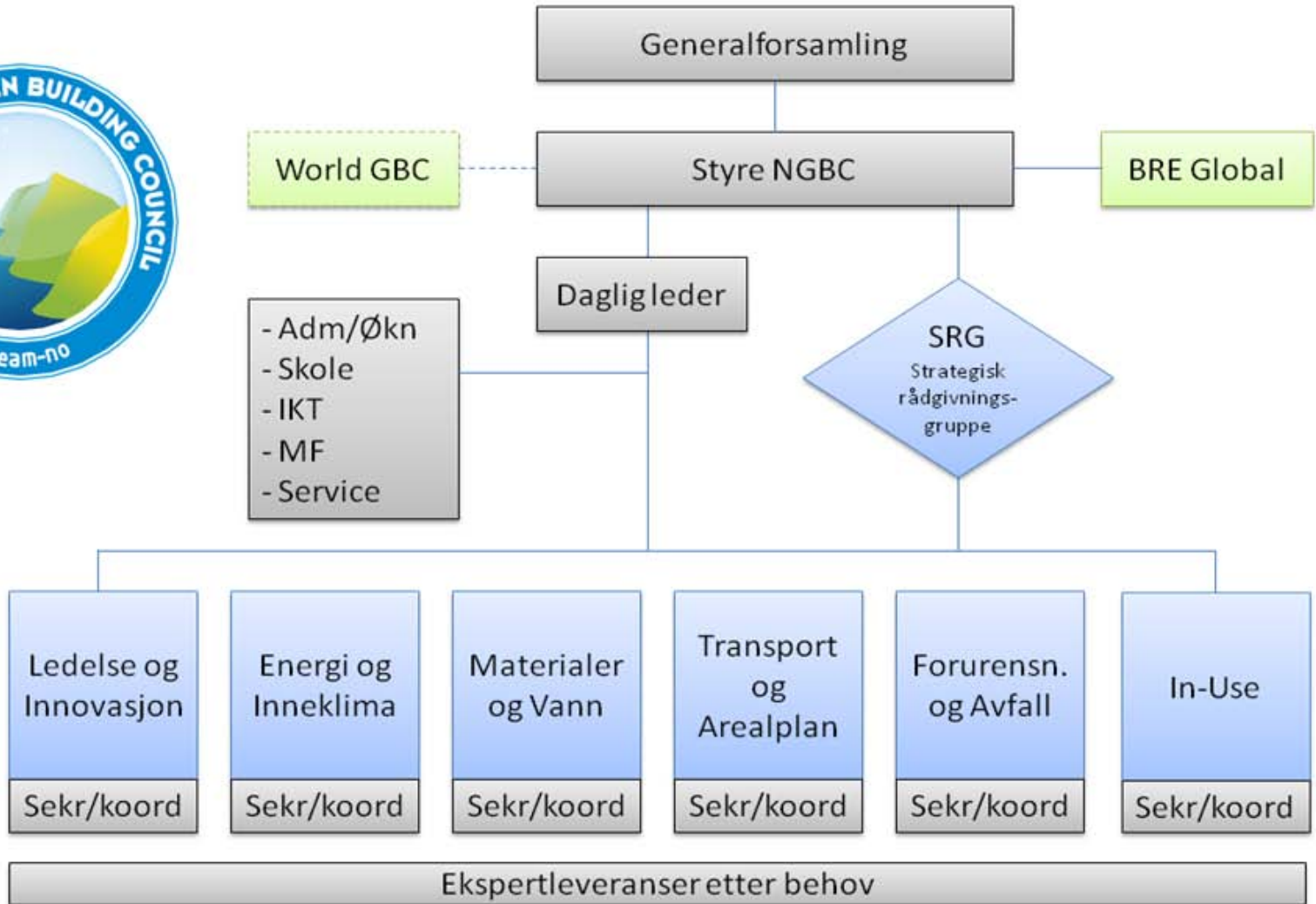
hvordan gis BREEAM NOR poeng i materialdelen?

EcoProduct v/ Katharina Bramslev, hambra

Hva og hvordan?

Hva er Klimagassregnskap.no og IsyCalculus? v/ Katharina Bramslev, hambra

Hva gjør vi nå i mur- og betongbransjen? v/Jan Eldegard





BREEAM NOR ble lansert 20. oktober 2011 og vurderer et byggs miljøegenskaper ved å gi poeng innen følgende områder:





# Stikkord til hvilke hovedpunkter som behandles i BREEAM NOR:

<b>Management</b> <ul style="list-style-type: none"><li>• Commissioning</li><li>• Construction site impacts</li><li>• Building User Guide</li></ul>	<b>Waste</b> <ul style="list-style-type: none"><li>• Construction waste</li><li>• Recycled aggregates</li><li>• Recycling facilities</li></ul>
<b>Health and Wellbeing</b> <ul style="list-style-type: none"><li>• Daylight</li><li>• Occupant thermal comfort</li><li>• Acoustics</li><li>• Indoor air and water quality</li><li>• Lighting</li></ul>	<b>Pollution</b> <ul style="list-style-type: none"><li>• Refrigerant use and leakage</li><li>• Flood risk</li><li>• NO<sub>x</sub> emissions</li><li>• Watercourse pollution</li><li>• External light and noise pollution</li></ul>
<b>Energy</b> <ul style="list-style-type: none"><li>• CO<sub>2</sub> emissions</li><li>• Low or zero carbon technologies</li><li>• Energy sub metering</li><li>• Energy efficient building systems</li></ul>	<b>Land Use and Ecology</b> <ul style="list-style-type: none"><li>• Site selection</li><li>• Protection of ecological features</li><li>• Mitigation/enhancement of ecological value</li></ul>
<b>Transport</b> <ul style="list-style-type: none"><li>• Public transport network connectivity</li><li>• Pedestrian and Cyclist facilities</li><li>• Access to amenities</li><li>• Travel plans and information</li></ul>	<b>Materials</b> <ul style="list-style-type: none"><li>• Embodied life cycle impact of materials</li><li>• Materials re-use</li><li>• Responsible sourcing</li><li>• Robustness</li></ul>
<b>Water</b> <ul style="list-style-type: none"><li>• Water consumption</li><li>• Leak detection</li><li>• Water re-use and recycling</li></ul>	<b>Innovation</b> <ul style="list-style-type: none"><li>• Exemplary performance levels</li><li>• Use of BREEAM Accredited Professionals</li></ul>



Bli med og sett et positivt avtrykk.....

